

The Ray Allen Company Inc.

1341 Distribution Way Ste 15, Vista, CA 92081 USA Ph 760 599 4720 Fx 760 599 4383

www.rayallencompany.com

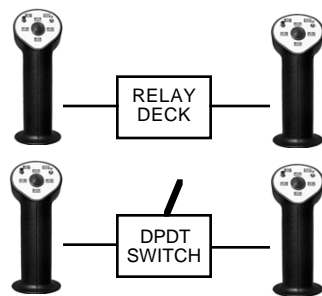
INSTALLATION INSTRUCTIONS FOR G301 / G303 Stick Grip

INTRODUCTION

The G303 stick grips feature two individual SPDT momentary contact switches to control one axis electric trim. These switches are triggered via a traditional "hat" type activator. A slotted one axis faceplate adds to the very positive switching action. There is a momentary contact, SPDT Push-To-Talk (PTT) switch located on the front side of the grip. The G301 has only a PTT switch.

The hand grip itself is made out of a very strong BASF composite that has excellent UV resistance. The entire grip has a textured, non-slip finish. The G303 grips are 6.5" (165 mm) tall and 2.5" (64mm) wide.

All Ray Allen Stick Grips are designed to fit any stick size up to 1 1/8" diameter with the use of spacers. Three spacers are included with each grip enabling easy installation on 3/4", 7/8" and 1" sticks. The stick grips include precut and stripped 26 gage Teflon insulated 19 strand wire for sharing ground and 12V+ between the switches. A longer wire bundle is supplied for the long runs exiting the grip.



Before wiring the switches, you must decide how the grips will be utilized.

- * ONE GRIP - If you are using only one stick grip, wire the switches as shown in Style 1.
- * TWO GRIPS - If you are planning to install two stick grips, wire the switches as shown in Style 2 using a relay. With this method either control stick can control the aircraft trims at any time.
- * TWO GRIPS (ALTERNATIVE) - If you want to install two stick grips, but do not want to use a relay, you can install a DPDT toggle switch that transfers control from one grip to the other. Wire the switches as shown in Style 1.

ASSEMBLY TIPS

Soldering will be required during the assembly of your stick grip. Here are some helpful hints on soldering technique:

- * Use a small, "pencil" style soldering iron (less than 40 watts) with a cone or round pointed tip. Keep the tip clean at all times.
- * Use good quality, rosin core (60/40 tin/lead content is ideal). It's available at electronics stores such as Radio Shack.
- * Let the soldering iron thoroughly warm up before attempting to solder.
- * Push the stripped end of each wire through the holes in the switch's soldering tabs before applying solder. Otherwise, you would have to push the wire end through the solder (not easy).
- * Place the tip of the soldering iron against the soldering tab and wire end. Let the tab and wire heat up for a couple seconds, then add solder to the joint. The solder should flow smoothly around the wire/tab junction.
- * Remove the solder from the wire/tab joint just before removing the tip of the soldering iron.
- * Do not use too much solder on the wire/tab joints. A big blob of solder is not acceptable on some joints because of possible interference with other parts. If you have too much solder on a joint, clean the soldering iron tip and heat up the joint. Excess solder will flow onto the tip and off the joint.
- * **A good solder joint will flow smoothly and look glossy after cooling.** A frosty and jagged looking solder joint indicates that the solder was not hot enough or the flux was allowed to burn away before the solder joint was completed.

Warning: Installation and use of Ray Allen Company products is the responsibility of the aircraft designer and builder. Use of Ray Allen products in any application which will exceed their capability can cause failure leading to injury or death.

About the wires:

Your Ray Allen stick grip comes to you with precut and stripped, 26 gauge, 19 strand, Teflon insulated wires. Each of these wire pieces are cut to specific lengths for specific connections. In the following instructions, you will be told which wire lengths should go where, eliminating any guess work on your part. **Please follow the wiring sequence shown in the instructions. If you do not route the wires exactly as shown, clearance problems will arise during final assembly of the grip.**

About the labels:

A die cut, Lexan covered label sheet is supplied in the kit. It is important to clean the recessed areas in the top case with alcohol to remove any oils that would prevent the adherence of the labels.

About the switches:

The trim and PTT switches in the G3 series stick grip are all 15 amp, single pole, double throw (SPDT), Honeywell Microswitches. These high quality switches were specifically chosen for their superior tactile feedback. Each switch has a common terminal on the side and a normally closed (NC) and a normally open (NO) terminal on one end. As you look at the switches in the switch module, all the switch terminals **close** to the center are normally **closed** (NC), all the terminals furthest away are normally open (NO).

STEP 1. DISASSEMBLE THE STICK GRIP

The G3 series stick grips are assembled at the factory to check fit and finish. The first step is to separate the grip halves. Use the 3/32" hex end wrench to remove the four 4-40 X 7/16" socket head screws at location A, B, C and D. See Figure 1 below for details.

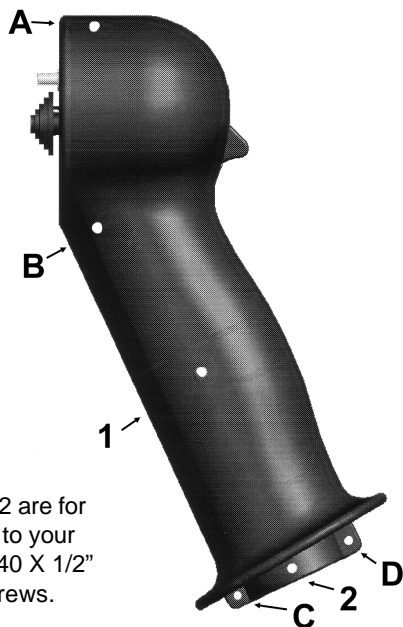
As you pull the halves apart, be careful not to let the switch module fall to the floor. Remove the switch module and notice how it is supported in the grooves molded into the grip halves. The PTT switch can be removed by lifting it from the support pylons. Note the switch's orientation.

Figure 1

Screw holes A, B, C and D are for securing the grip halves together with 4-40 X 7/16" socket head screws.

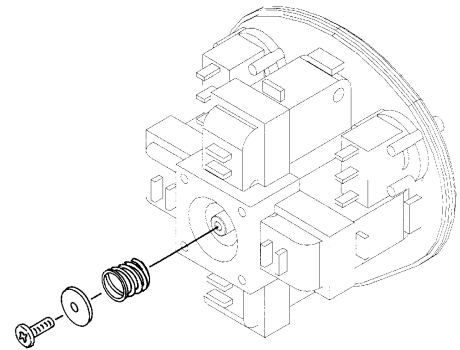
DO NOT over tighten when reinstalling these screws!

Screw holes 1 and 2 are for mounting the grip to your control stick with 4-40 X 1/2" socket head screws.



The grip is normally assembled with a black faceplate. To change the faceplate to the gray or tan color, the switch activator must be removed. This is done by removing the screw, washer and spring in the bottom of the switch module. See Figure 2. Remove the switch actuator, exchange faceplates and reassemble. Use caution not to over tighten the switch activator screw.

Figure 2



STEP 2. WIRING YOUR STICK GRIP

Wiring style 1 (see Figure 3 opposite page)

Wiring style 1 will directly control the Ray Allen trim servo without a relay. The wiring shown in the following diagrams can be completed with the precut and stripped wire segments included with the grip. The 20 ft. of wire (also included) can be cut and used to exit the grip and control stick. To avoid confusion, be sure to mark these exiting wires before closing the grip halves.

Wiring style 2 (see Figure 4 opposite page)

Typically, wiring style 2 is used when two stick grips are installed in the aircraft. Either stick grip can trim the aircraft. Only two terminals on each switch are used. This wiring style requires the use of relays.

When the switch is activated, it completes a circuit that sends a ground signal to a relay. The relay controls the servo. In the wiring schematic on the bottom of this page, the Ray Allen REL-2 Relay Deck sends the power to the servo.

Figure 3 - Wire style 1

NC = normally closed
 NO = normally open
 C = common

NOTE: All the switch terminals close to the center of the switch module are NC. All the terminals furthest away are NO.

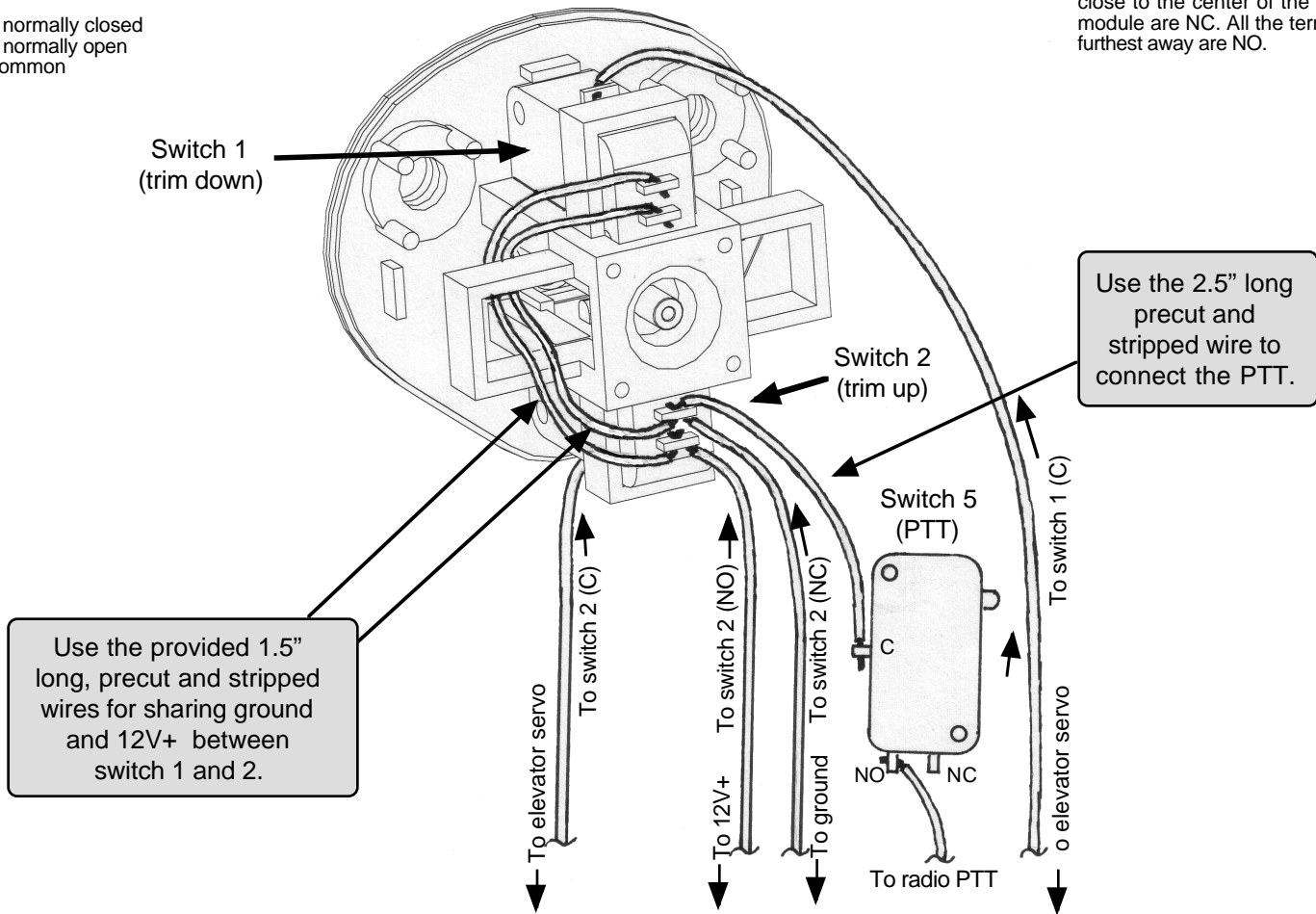
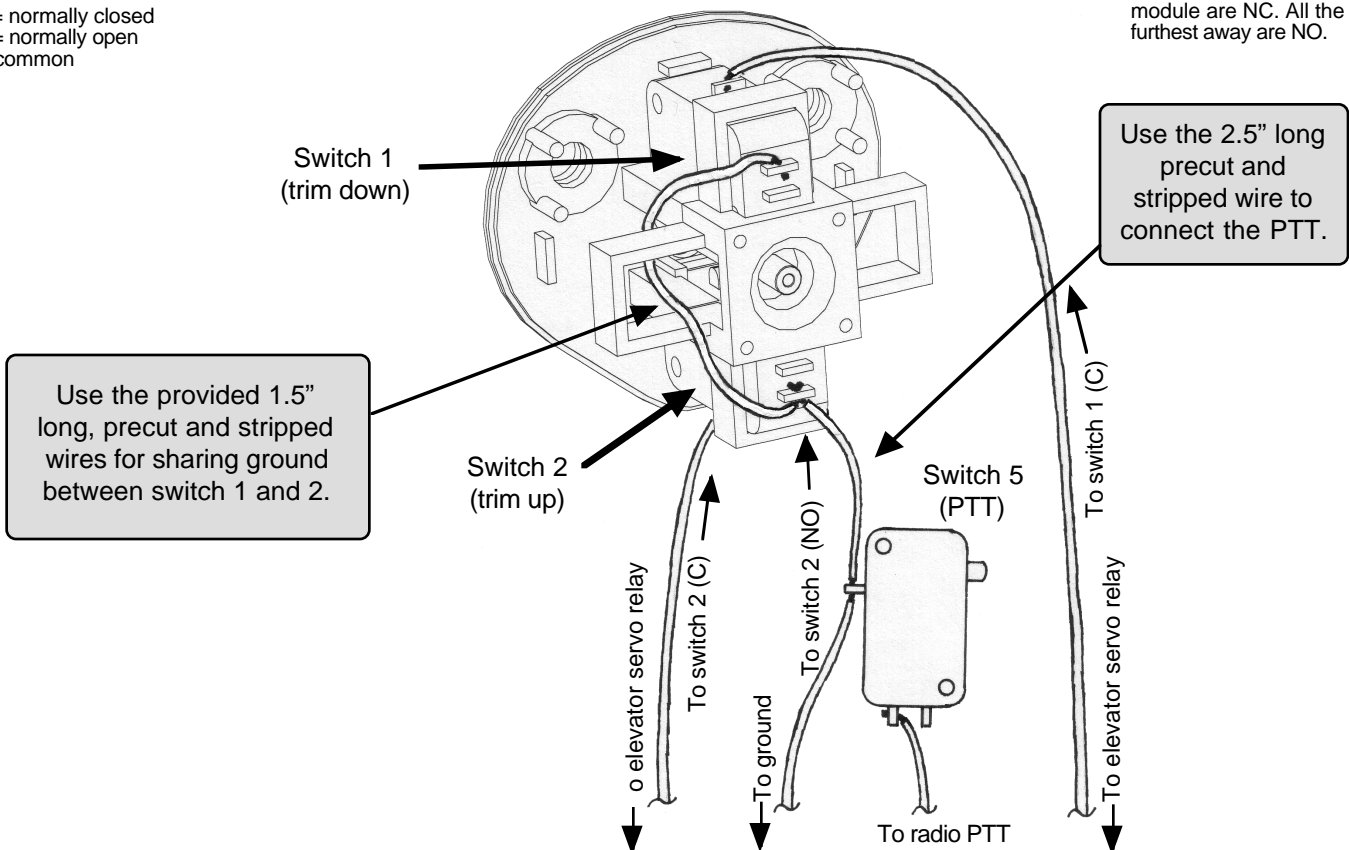


Figure 4 - Wire style 2

NC = normally closed
 NO = normally open
 C = common

NOTE: All the switch terminals close to the center of the switch module are NC. All the terminals furthest away are NO.



STEP 3. REASSEMBLY AND WIRE ROUTING

With the switches wired and *the exit wires labeled*, you are now ready to reassemble your stick grip. However, it is advisable to drill and tap your control stick for the grip **BEFORE** you spend too much time reassembling. Reassembly is accomplished by first reinserting the switch module into the left grip half. **It is critical that both the faceplate and the switch module fit tight INSIDE the groove!** See Figure 5 at right for our recommended wire routing. Note that you can exit the wires out of the grip through your control tube or forward of the stick tube.

STEP 4. MOUNTING THE GRIP

Choose the proper spacer size or combination of sizes for your control stick diameter. Align the spacers using the screw hole locations and tack glue the spacers into the grip for easier assembly (we use Testors plastic model cement). Notice that the spacer's screw holes only align with the grip side in one orientation. See Figure 6 for details.

Assemble the grip and position it onto your control stick. Check carefully for clearance problems. You may have to cut down your control stick tube to avoid your instrument panel.

Using the screw holes 1 and 2 on each grip half as drill guides, carefully drill #43 size holes through your control stick tube. Some control stick tubes are plated, so use a high quality drill (TiCN or Carbide). Remove the grip and tap all four holes in the control stick tube to a 4-40 thread size.

Secure the grip to your control stick using the provided four 4-40 X 1/2" socket head cap screws as shown in Figure 7.

Figure 5

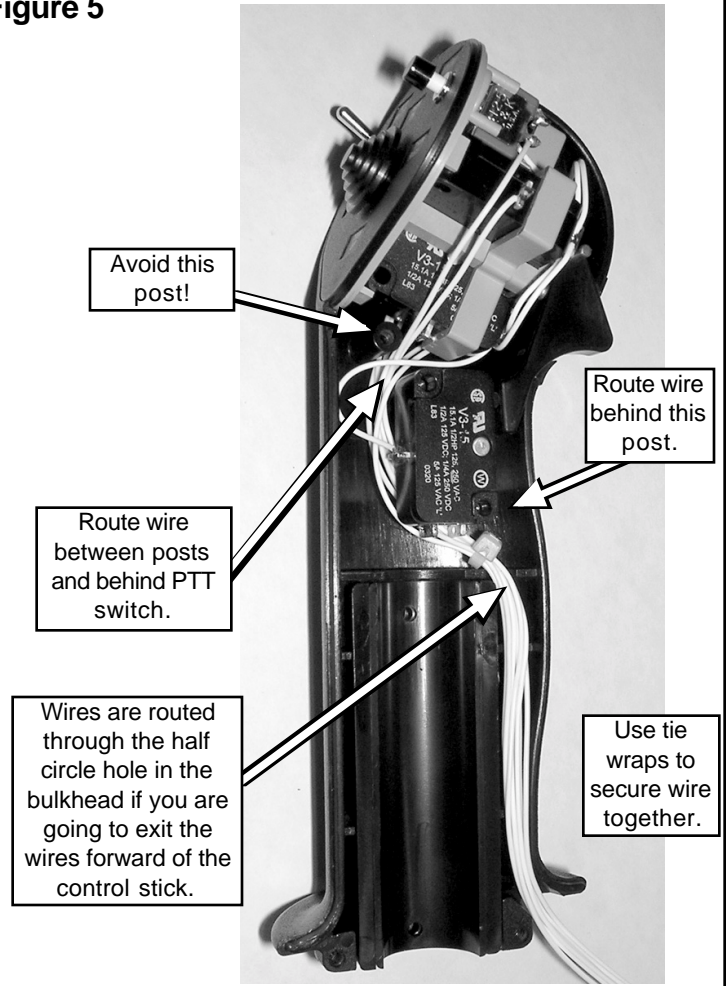


Figure 6

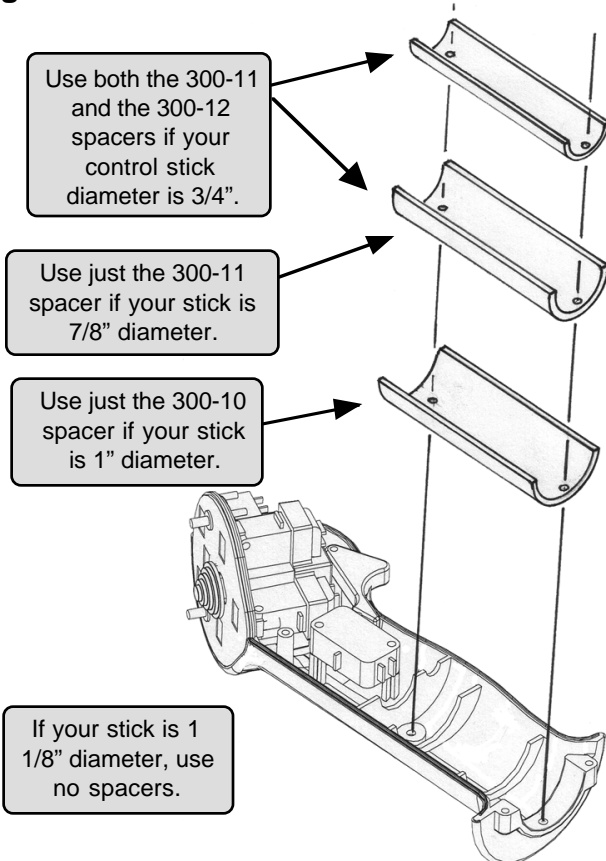


Figure 7

