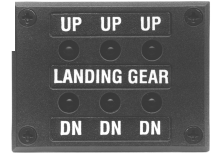


The Ray Allen Company Inc.

1341 Distribution Way Ste 15, Vista, CA 92081 USA Ph 760 599 4720 Fx 760 599 4383

www.rayallencompany.com

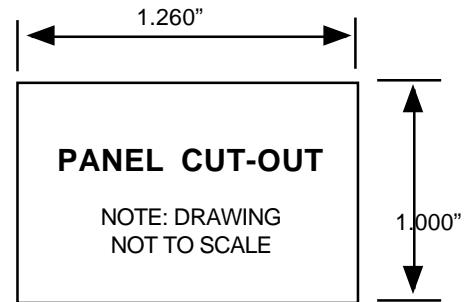


GWL-1 Gear Warning Lights

The GWL-1 Gear Warning Lights are designed to provide bright, clear indication of whether your landing gear is down. The switches to activate the lights are not provided. Be sure to use good quality, Single Pole, Double Throw (SPDT) switches in your gear system. The green lights signify when the gear is down, the yellow lights show that the gear is in the fully retracted position. This will require a total of six switches to be installed and activated by the gear legs (see **Wiring Style 1** below).

A simpler method is to wire the yellow lights to the gear down switches in the "Normally Closed" position. This method, described in **Wiring Style 2** on page 2, will require SPDT switches. Using this method, the yellow lights will not actually indicate that the gear is in the "Up" position. Instead, the yellow lights will only tell you that the gear is **not** contacting the gear down switch.

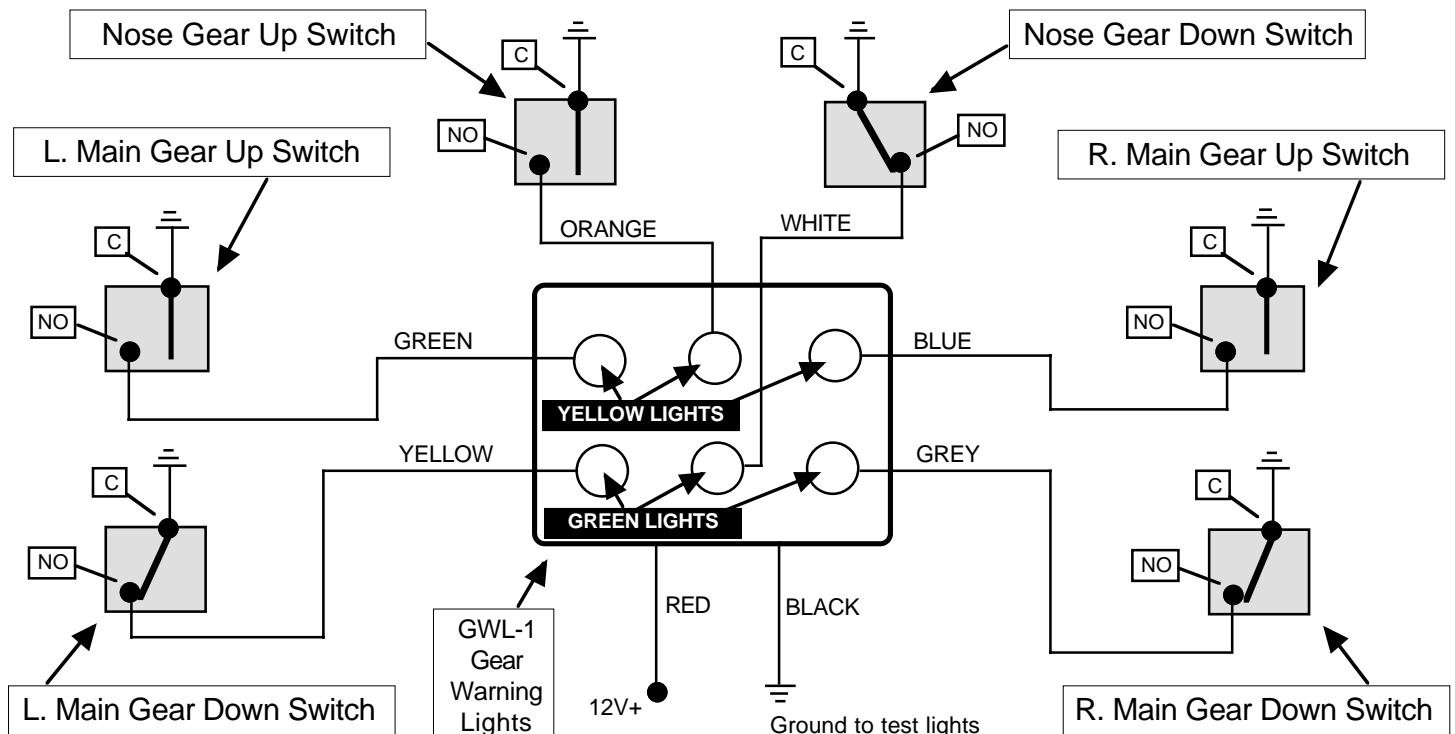
Wire according to **Wiring Style 3** on page 2 to have the three yellow lights display "gear in transit" and then turn off when the gear up switches are tripped.



Wiring Style 1

NOTE: This drawing simulates wheels down condition. These switches can be either SPST or SPDT.

NC = Normally Closed NO = Normally Open C = Common

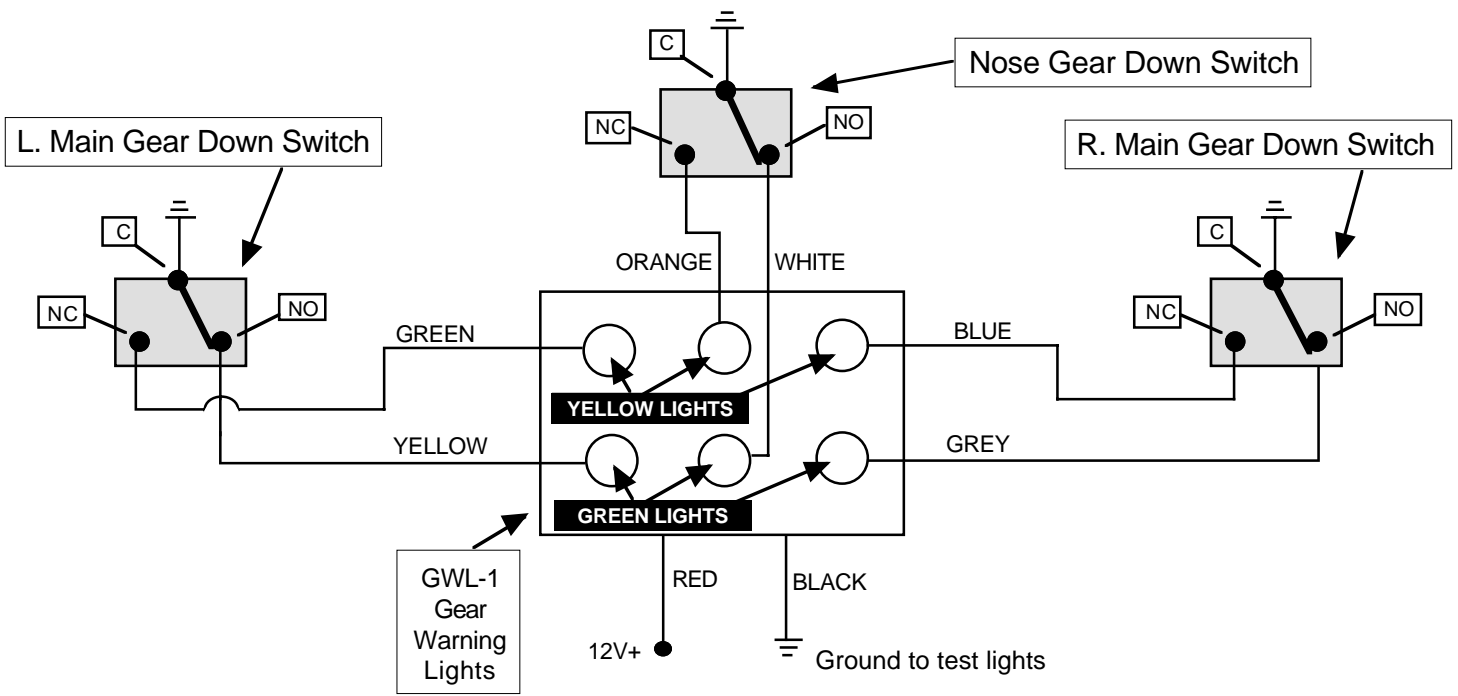


Warning: Installation and use of Ray Allen Company products is the responsibility of the aircraft designer and builder. Use of Ray Allen products in any application which will exceed their capability can cause failure leading to injury or death.

Wiring Style 2

NOTE: This drawing simulates wheels down condition.

NC = Normally Closed NO = Normally Open C = Common



Wiring Style 3

NOTE: This drawing simulates wheels down condition.

NC = Normally Closed NO = Normally Open C = Common

