

# The Ray Allen Company Inc.

2525-8 Pioneer Avenue, Vista, CA 92081 USA Phone 760 599 4720 FAX 760 599 4383

www.rayallencompany.com

## SPD-1 SERVO SPEED CONTROL

### INSTALLATION INSTRUCTIONS



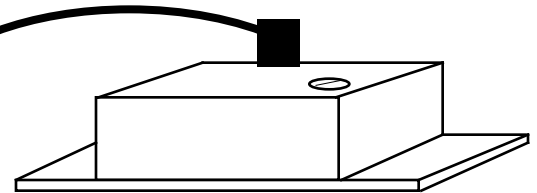
Install the speed control at any convenient location preferably near the trim switch. Secure to the airframe with two screws or simply tie onto a wire bundle using nylon straps, etc. It is not necessary to ground the case of this unit.

Wire according to **Diagram 1** if you are using a RAC rocker switch or **Diagram 2** if you are using a 4-way switch and relay deck combination. Refer to **Diagrams 3 and 4** for other switching methods. Use appropriate wire connectors or solder all connections and use a heat-shrinkable tubing for insulation. Fuses and circuit breakers are not included, but are highly recommended for all installations.

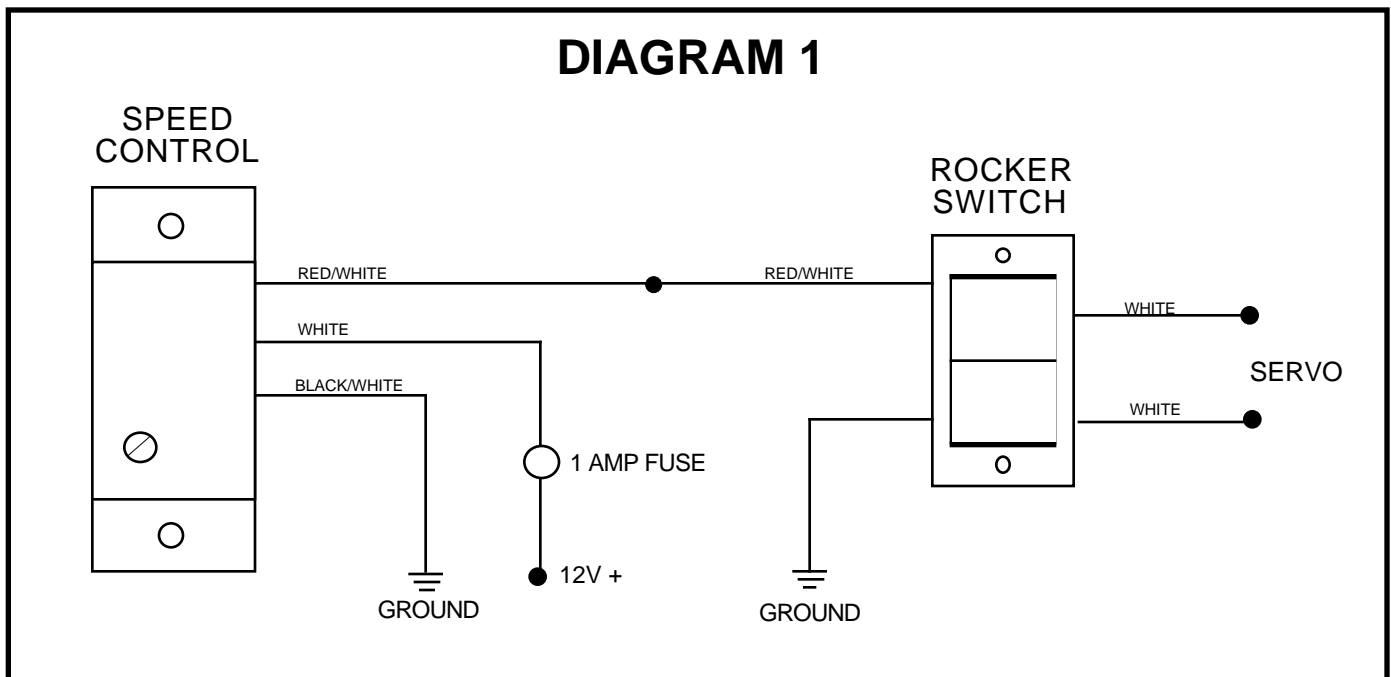
The RAC speed control can handle 2 RAC trim system power requirements.

*Carefully* adjust to the desired servo speed using a small #1 flat screwdriver in the slot as shown.

**NOTE**- the servo motor will proportionally lose thrust the slower you adjust the speed control.

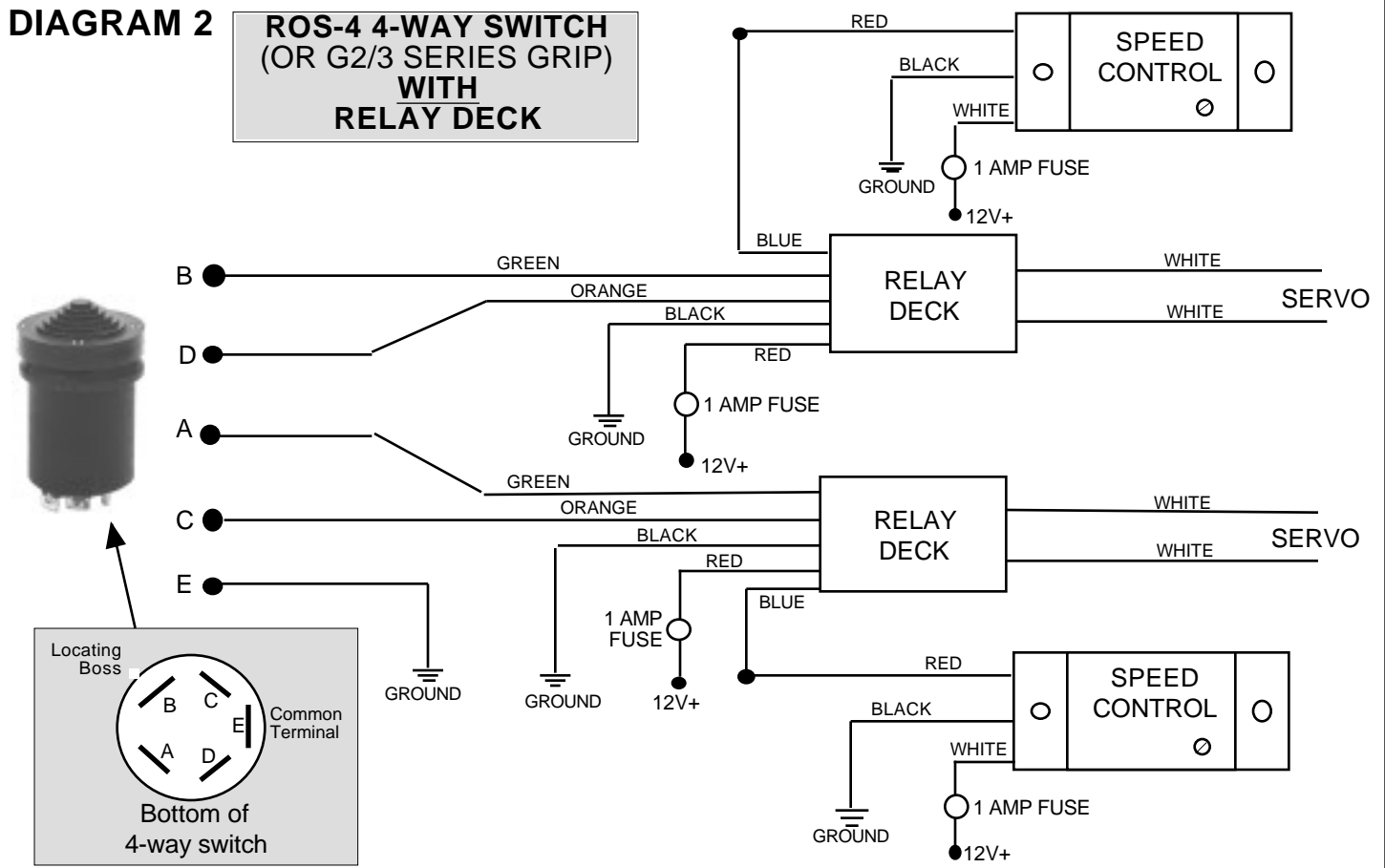


### DIAGRAM 1

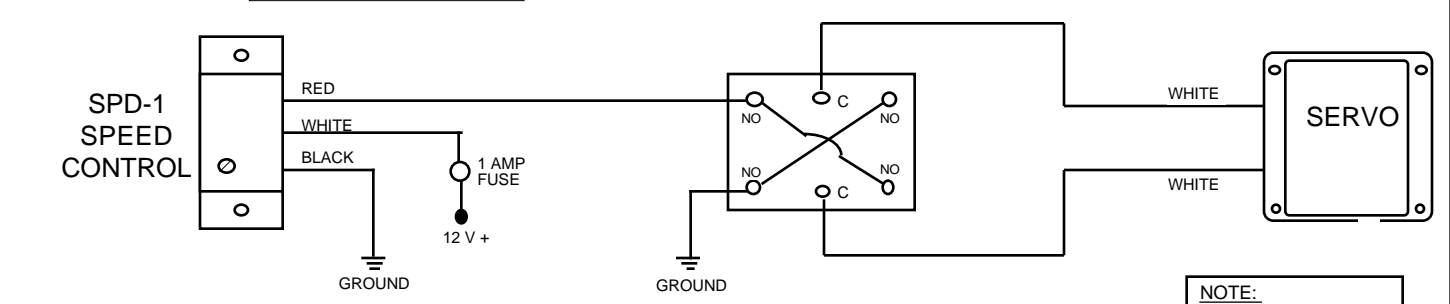


**Warning:** Installation and use of Ray Allen Company products is the responsibility of the aircraft designer and builder. Use of Ray Allen products in any application which will exceed their capability can cause failure leading to injury or death.

**DIAGRAM 2 ROS-4 4-WAY SWITCH (OR G2/3 SERIES GRIP) WITH RELAY DECK**



**DIAGRAM 3 DPDT SWITCH**



**NOTE:**  
 NO = Normally Open  
 NC = Normally Closed  
 C = Common

**DIAGRAM 4 RAC STICK GRIP WITHOUT RELAYS (OR FOUR SPDT PUSHBUTTON SWITCHES)**

